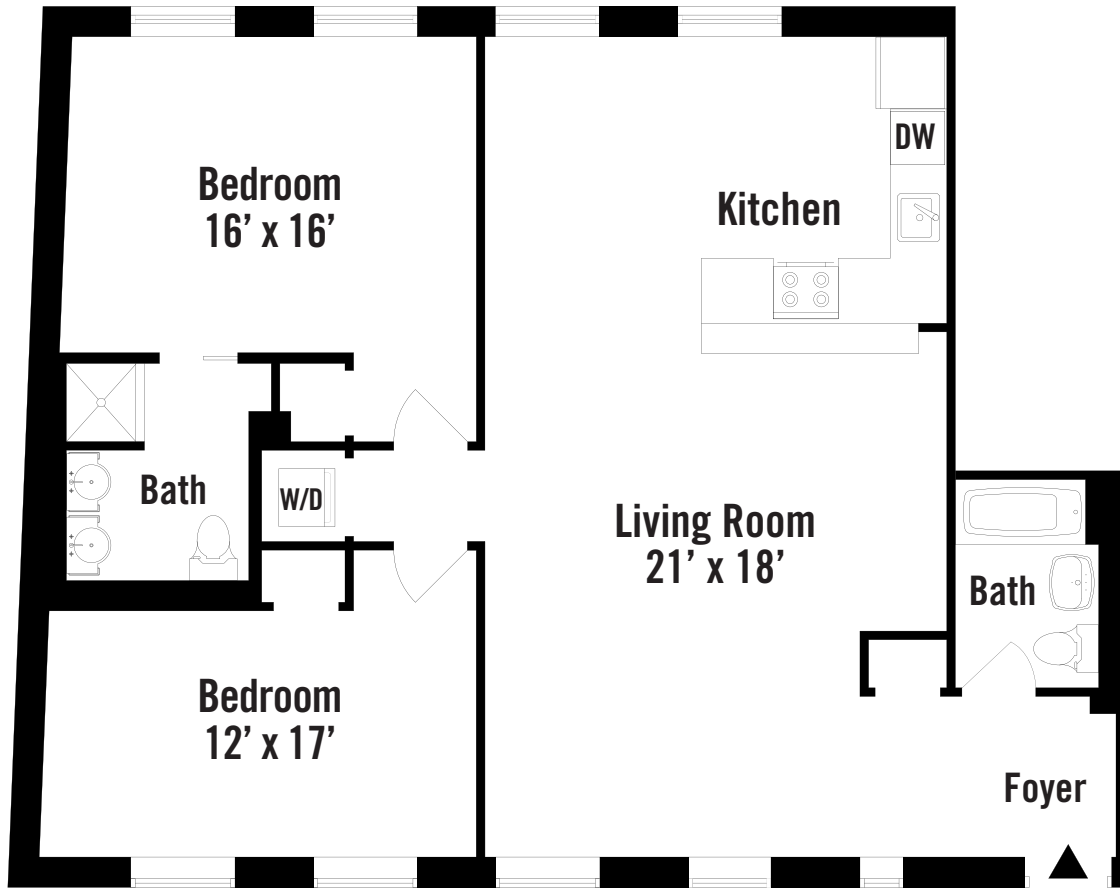


# HISTORIC FRONT STREET



## Apartment Features

- Zoned Heating and Air Systems
- Beech Plank Wood Flooring
- Seidel Video Intercom System
- Bosch Washer and Dryer
- Wired for High-Speed Internet Access
- Garden Courtyard

## Kitchen Features

- GE Profile Series Stainless Steel Stove, Vent Hood, Refrigerator (with Ice Maker), Dishwasher, and Microwave
- Pompeii Stone Countertops with Wireglass Backsplash
- Maple Cabinetry with Glass Doors
- Kohler Sink
- Track Lighting

## Master Bath Features

- Marble Floor and Vanity Tops
- Subway Tile with Glass Tile Accents
- Kohler Fixtures
- Speakman Faucets

## Guest Bath Features

- Marble Floor
- Pedestal Sink
- Wainscoting Throughout
- Subway Tile Shower
- Kohler Fixtures
- Speakman Faucets

## Unique Apartment Features

- Views of the Brooklyn Skyline, East River, South Street Seaport and the Landscaped Mews
- High Ceilings

## CHANDLER'S COURT

**217 Front Street, Apartment 4D**  
Fourth Floor  
2 Bedrooms, 2 Baths

## Contact:

James Dorward  
212-566-5330  
jdorward@historicfrontstreet.com